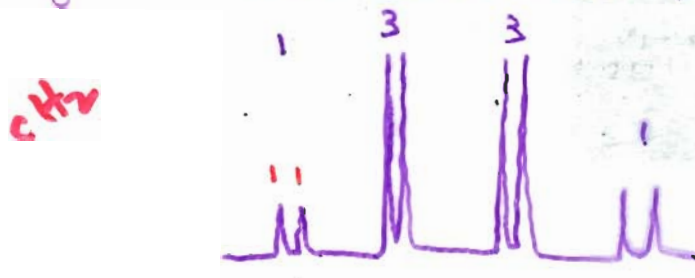
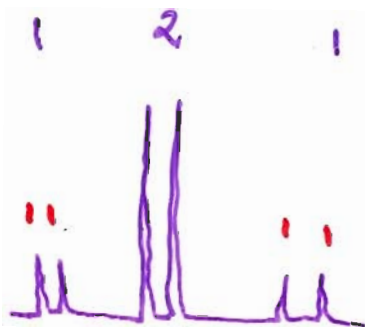


If coupling with OH is retained, then the  $\text{CH}_2$  signal looks like the following.



split to 1:3:3:1 by  $\text{CH}_3$   
and then to 1:1 by OH  
Coupling with  $\text{CH}_3$  layer.

The  $\text{CH}_3$  signal will appear as



split to 1:2:1 by  $\text{CH}_2$   
first, then to 1:1 by OH  
Coupling with  $\text{CH}_2$  layer